

Annual Report 2019-20



Global Hospital & Research Centre

J Watumull Global Hospital & Research Centre and
other units of the trust



What's inside?



1 Reflections



5 The flagship unit



9 Ophthalmic services



13 Branches

19 Community outreach

23 Research



27 Education



31 Training & development

35 Consultants & doctors

37 Equipment upgrades



39 Governance & financials

Reflections





In providing medicine as well as prayers, you experience strength and happiness.

BK Hridaya Mohini
Administrative Head
Prajapita Brahma Kumaris
Ishwariya Vishwa Vidyalaya

In these contemporary Covid-19 times I was very happy to receive news of the fearless, loveful and tireless services of the doctors, nurses and allied staff at Global Hospital. At present people everywhere are experiencing sorrow, worry and fear. Our Global Hospital has emerged as a beacon of spirituality; empowering patients who visit. You have created a pure, peaceful and happy environment that alleviates suffering and pain, and gives patients a sense of calm.

You feel patients' pain, and to sustain them, you offer altruistic, spiritual love. Your compassion extends to providing medicine as well as prayers. In doing this, patients are touched forever. You experience strength and happiness. You receive Godly blessings as well as good wishes from patients and their families. I congratulate everyone with blessings and heartfelt love. Always keep serving with enthusiasm and accumulate in your account of charity. In these times, new kinds of incurable illnesses will emerge. You Rajyogi sisters and brothers will understand and treat these illnesses with your power of silence, this will be the basis of your success.

I am happy that so many sisters and brothers from India and overseas visit Global Hospital to get treated. With their love and cooperation our Global Hospital is progressing manifold. My heartfelt wishes are with the hospital family.



In memorium

The world will remember 2020 as the year of Covid-19 but for us at Global Hospital, the saddest personal event was the passing away of Dadi Janki in March just before India locked down for the pandemic.

Yes, Dadi Janki was the administrative head of the Prajapita Brahma Kumaris Ishwariya Vishwa Vidyalaya, a deceptively diminutive persona who we knew as a woman of indomitable spirit. We also knew her as the inspiration behind the Janki Foundation for Spirituality in Healthcare, a charity registered in the UK, to which we are indebted for its continuous support over more than the last two decades.

Dadi was synonymous with making things happen. She exemplified the quality of spontaneity. The ease and speed with which she translated "thought" into "action" was educational.

Dadi also epitomised being constantly combined with the Divine—and that must be where she got her unending reservoir of positivity. You couldn't ever complain to Dadi about anyone or any situation. She would wave your complaint aside with a brush of her hand, the message always being—focus on the positive. Don't feed and thereby energise negativity.

Dadi has moved on to her next role leaving behind the qualities she personified for us to carry forward.

Om Shanti!



It is humbling to witness how units of Global Hospital continue to work closely with Central and State Governments to provide optimal medical care and treatment.

BK Nirwair
Managing Trustee
Global Hospital & Research Centre

It fills my heart with pride to be contributing towards the Global Hospital & Research Centre Annual Report for the year 2019-2020.

2020 has been a traumatic year for the world, especially the medical fraternity, as it stepped into a new role, of COVID-19 warriors to serve countless members of our global family. Global Hospital too has done extraordinary work this year in supporting the well-being of many, many patients.

Our medical directors, consultants, nurses, administration faculty, and technology and utility service providers have collectively made Global Hospital & Research Centre famous throughout the world with their conscientious, loving work ethics.

We take this opportunity to honour the memory of our beloved and respected Rajyogini Dadi Janki, former chief of the Brahma Kumaris, who contributed passionately to the hospital services until the time she ascended to the subtle realm in March 2020.

It is humbling to witness how units of Global Hospital continue to work closely with Central and State Governments to provide optimal medical care and treatment to needy patients.

Wishing the world all the very best for a productive 2020-21!



There is a need to strike a balance between the treatment of Covid-19 and non-Covid-19 patients who need elective care and procedures.

Dr Ashok Mehta
Trustee, Global Hospital & Research Centre,
Honorary Medical Director, BSES MG Hospital,
Honorary Medical Director, J Watumull Global Hospital &
Research Centre

As a result of the Covid-19 pandemic, we are facing the challenge of Covid-19 cases in Baba's hospital in Mumbai. There is a need to strike a balance between the treatment of Covid-19 and non-Covid-19 patients who need elective care and procedures. Difficult decisions lie ahead to try and achieve the correct balance of urgent Covid-19 versus elective care and procedures for non-Covid-19 patients. We need to make a representation on behalf of our trust to the Municipal Corporation of Greater Mumbai and the Government of Maharashtra.

There is a serious concern about the current and long-term impact of these pressures on the health and wellbeing of clinicians. "Moral injury" is probably the most prevalent psychological effect of Covid-19. It symbolises the harm done to a person's moral compass when he or she witnesses people dying alone in the ward. We need to wear our "psychological PPE" to protect ourselves.

There has been collateral damage due to successive lockdowns, isolation, job losses and the economic impact of measures implemented to protect us from the virus. These raise the risk of developing stress-related disorders such as insomnia, anxiety, depression in those working in the hospital. An overwhelming workload, fatigue, exhaustion, inadequate personal protection equipment and feeling unsupported—all of these factors contribute to stress. Some people left cities for fear of their children and parents being afflicted and losing their lives. The need of the hour is to address all these issues urgently and with compassion. Om Shanti!



Last year, Rotary International Global Hospital Blood Bank stepped up its performance to touch 100% voluntary blood donation (from 99%). This is a commendable achievement.

Dr Pratap Midha
Medical Director
J Watumull Global Hospital &
Research Centre & Trustee
Global Hospital & Research Centre

It was a year of many positives. Here are my top picks:

A gaming company PlayGames24x7 supported the screening of a large number of people for oral cancer and treating poor patients found suffering from the disease. Last year, 2,345 men and women were screened and 13 people with cancerous lesions were operated on. Senior consultant ENT surgeon Dr Sharad Mehta led this initiative actively supported by oral & maxillofacial Dr Keyur Mevada, especially for the field visits.

Did you know that every 2 seconds, someone needs a blood transfusion? However, not everyone is lucky to get this life-saving product. In fact, India has the world's largest shortage of blood, a shortfall of 41 million units, which is 40% of the global shortfall. In India, demand outstrips supply by over 400 per cent. And demand is rising. In this context, the performance of the Rotary International Global Hospital Blood Bank must be lauded. A Regional Blood Transfusion Centre in Rajasthan, it usually records 99% voluntary blood donation. Last year, it stepped up to touch 100% voluntary blood donation. All of its 6,681 donor bleeds were volunteers, none was a "replacement" blood donation, which are likely to involve commercial interests. This is a commendable achievement.

The Thalassemia Day Care Centre attached to the blood bank celebrated its first anniversary on October 2. It used 612 of the units collected by the bank for 39 registered patients.

Audiology and speech language pathology trained Purva Vyas runs a speech therapy service attached to the Department of ENT. This is an essential service for patients who undergo cleft

reconstructive surgery as well as people with a speech issue.

On February 4, World Cancer Day 2020, the Prajapita Brahma Kumaris Ishwariya Vishwa Vidyalaya felicitated Dr Ashok Mehta, trustee of Global Hospital & Research Centre, for his outstanding contribution to oncology over the last five decades.

On the invitation of the American Academy of Ophthalmology, senior consultant ophthalmologist Dr Sudhir Singh presented his low cost, innovative cataract operation technique at their annual meet at San Francisco, USA, in October 2019.

Our programme to assist tuberculosis patients is small but important. Field workers do the rounds of villages to identify suspect tuberculosis patients and get their sputum tested. They make periodic visits to positively identified patients to ensure their compliance with the six month-long treatment regimen. They also give patients high-protein food packets to help build their immunity and prevent relapses. Last year, the workers facilitated 1,172 sputum exams, which revealed 265 positive cases. During the year, 155 patients were declared cured.

Senior orthopaedic surgeon Dr Narayan Khandelwal and consultant orthopaedic surgeon Dr Kailash Kadel operated on 66 patients during the year performing knee or hip replacements. I am happy that this service, which started two decades ago, is continuing, and now offered as a regular monthly feature.

The flagship unit



J Watumull Global Hospital & Research Centre



Healthcare for all irrespective of social or economic background has been the hospital's mission since 1991

Between April 2019 and March 2020, the unit logged 100,066 walk-ins

- Acupressure, 3%
- Ayurveda, 2%
- Casualty, 4%
- Dentistry, 12%
- Dermatology*, 4%
- Diabetes, 2%
- Dietetics, <1%
- ENT, 7%
- Gynaecology & Obstetrics, 5%
- Homoeopathy, 1%
- Magnet therapy, 3%
- Medicine, 21%
- Neuropsychiatry, 4%
- Ophthalmology, 9%
- Orthopaedics, 6%
- Paediatrics, 6%
- Physiotherapy, 5%
- Plastic surgery, <1%
- Spirituality & wellbeing, 2%
- Surgery, 5%
- Yoga therapy <1%

Out-patients



94% opted for modern medicine, 6% for complementary therapies

...and 5,128 patients were hospitalised



46% were female, 54% were male

59% paid for their treatment, 9% paid somewhat, 32% did not pay

- Diabetology, 7%
- Dialysis, 37%
- ENT, 8%
- Gynaecology & Obstetrics, 1%
- Medicine, 18%
- Neuropsychiatry, 1%
- Ophthalmology, 8%
- Orthopaedics, 5%
- Others, 1%
- Paediatrics, 4%
- Plastic surgery, 1%
- Surgery, 8%

In-patients

* Includes services by a visiting dermatologist

Key hospitalisation disciplines

J Watumull Global Hospital & Research Centre is a secondary care hospital offering a few select tertiary care services. Some of the key disciplines offering hospitalisation are as follows:

Non surgical

- ▶ Holistic care of diabetes
- ▶ Cardiac and other medical conditions
- ▶ Care of paediatric patients
- ▶ Dialysis

Surgical

- ▶ Surgery of the gall bladder, intestine, esophagus, rectum, including abdominal cancers
- ▶ Head & neck cancers
- ▶ Ear microsurgery
- ▶ Surgery for fractures
- ▶ Knee & hip joint replacement surgery
- ▶ Cataract & other eye operations
- ▶ Hysterectomy, conventional and vaginal



Manju Garasia, 9, was treated for rheumatoid arthritis and lower respiratory tract infection

Donors, government programmes and internal funds support our work



GiveIndia

Enables poor patients to access a gynaecologist, paediatrician and radiologist. Also covers the cost of gynaecological operations, trauma care, CT scans and nutritional supplements for poor tuberculosis patients.
 Donor since 2009 | Sponsor Taps online donors | Beneficiaries Thousands



Ayushman Bharat Mahatma Gandhi Rajasthan Swasthya Bima Yojna

Covers the cost of pre-hospitalisation diagnostics and treatment for every poor family covered under the National Food Security Act in Rajasthan.
 Operational since 2015 | Sponsor Rajasthan Government | Beneficiaries 1963



Smile Train Inc.

Covers the cost of cleft lip and/or cleft palate corrective surgery for children from poor families.
 Operational since 2006 | Sponsor The Smile Train | Beneficiaries 132



Nisha Prajapat, 1, was born with a cleft lip. Her facial appearance and quality of life improved significantly after reconstructive surgery.



Oral Cancer Screening & Treatment Project

Meets the cost of screening people for oral cancer and treating poor patients.
 Operational since 2019 | Sponsor PlayGames 24x7 | Beneficiaries 2,345 people screened, 13 operated on



Lasama Ram, 44, needed surgery for cancer of the jaw


Juvenile Patients Fund

Meets the cost of diagnostics and treatment for children from poor families, at both the Mt Abu and Abu Road units.
 Operational since 2008 | Sponsor Individual donors | Beneficiaries 634 children

Dialysis Patients Fund

Covers the cost of dialysis at Mt Abu and Abu Road for poor patients who are not covered under any other health support programme.
 Operational since 2014 | Sponsor Individual philanthropists | Beneficiaries 47



Diagnostics

 Audiometry 

 Colour Doppler 

ECG 

Treadmill Test 

 Cephalogram 

Mammography 

Orthopantomogram 

Sonography 

Xray 

 Pathology 

 Spirometry 

 Electroencephalogram 

 Biofeedback 

Free diagnostics
Paid diagnostics



Most fascinating example of holistic medicine with real sense of purpose of all the medical and management staff.

DR RANI BANG
SEARCH, Gadchiroli, Maharashtra



Consultant GI, general & laparoscopic surgeon Dr Dilip Kothari operates on a patient

ENT, 22%, 18%, 23%

Gynaecology & Obstetrics, 3%, 2%

Ophthalmology, 34%, 9%

Orthopaedics, 18%, 25%

Others, 1%, 4%

Plastic surgery, 3%, 12%

Surgery, 19%, 30%, 77%

Operated patients

Major operations
Minor operations
Scope investigations

Ophthalmic services



Global Hospital Institute of Ophthalmology



Between April 2019 and March 2020, the unit logged 47,036 walk-ins

↳ 9% paediatric, 91% adult

96% direct walk-ins, 4% through camp referrals

Out-patients

- Artificial eye, <1%
- Computerised perimetry, 1%
- Contact lens, <1%
- Epilation, 1%
- Foreign body removal, 2%
- Fundus fluorescein angiography, <1%
- Fundus photography, <1%
- Low vision aid patients, <1%
- Optical coherence tomography, 1%
- Orthoptic examination, 5%
- Refraction, 77%
- Suture removal, <1%
- Syringing, 11%
- Ultrasonography, 1%
- Yag laser capsulotomy, 1%
- Yag laser iridotomy, <1%

...3,311 patients were hospitalised,
...3,122 were operated on

↳ 62% free admissions, 10% concession, 28% paid

Operated patients

- Cataract with intraocular lens, 2880
- Cataract without intraocular lens, 24
- Glaucoma, 17
- Ptosis, 1
- Secondary PC/AC IOL, others, 13
- Scleral fixated intra ocular lens, 3
- Penetrating keratoplasty, 1
- Other intraocular major surgeries, 193
- Minor surgeries, 183
- Eye banking collections, 10



I had grown so dependent that I used to beg for food. Now I will go back to farming. I am grateful to God and to the staff who helped me regain my vision.



Hypermaturation cataracts and corneal degeneration in both eyes left Ramidevi barely able to count the number of fingers from a distance of four metres.

Cataract blindness prevention

Global Hospital Institute of Ophthalmology, J Watumull Global Hospital & Research Centre and Sri Adinath Fateh Global Hospital are implementing agencies of the National Programme for Control of Blindness.

WHY | To fulfill a community need.

WHEN | Since 1997

BENEFICIARIES | 2,435 intra ocular lens implants and 27 small incision cataract surgeries that fell within government norms for the partial reimbursement of the cost of surgery. These included walk-ins and cases identified from 22,552 patients who presented themselves at 87 screening programmes.

SPONSORS | Government of India (partial reimbursement of the cost); Shri Shankarmandal Religious Public Charitable Trust of Mt Abu (121 patients); Seva Foundation with L V Prasad Eye Institute (175 patients); Mahavir International (screening, 209 patients); Champabai Chandulal Parmar Educational Foundation Trust of Pune (26 patients); Dr Solanki Eye Hospital (screening, 251 patients), Lions Club Jalore (screening, 156 patients).



Operated patients prior to leaving the hospital to return home



Paediatric ophthalmology

Global Hospital Institute of Ophthalmology offers children from economically less privileged families free surgery for eye ailments like cataract, squint, ptosis, keratoplasty, tumours, etc.

The community ophthalmology team also conducts eye check-ups of school students for the early detection and correction of eye ailments. Last year, 3,645 students from 11 schools had their eyes checked, 148 were found to have vision ailments, 58 were clinically treated.



Students line up for eye screening

Sri Adinath Fateh Global Eye Hospital

The Sri Adinath Fateh Global Eye Hospital is an ophthalmic unit in Jalore, commissioned in November 2017.

Late professor Mohan Lal Bohra of Jalore sponsored the creation of this new eye hospital in memory of his late wife, Shantidevi Mohanlal Bohra. The Bohra's are industrialists engaged in granite mining (Fateh Granites). For operational purposes, the Bohras' family charity, the Fateh Kalyan Charitable Trust, is represented by Sushila Chandmal Mehta, the late professors' daughter, and her cousins Pushpraj Bohra and Rameshraj Bohra.

Sri Adinath Fateh Global Eye Hospital houses 20 beds for patients from economically less privileged backgrounds and five for private patients, one major and one minor operation theatre, a sterilisation room, two clinics, two refraction rooms, one counselling room, one procedure room, an optical shop, a medical store, an admin office and support services.

Between April 2019 and March 2020, the unit saw 19,025 walk-ins

↳ 12% paediatric, 88% adult

...911 patients were hospitalised,
...836 were operated on

↳ 93% cataract surgeries



Vision Centres

Vision Centres in Raniwara, district Jalore, and in Kalandri and Pindwara, district Sirohi, conduct eye checks and minor ophthalmic procedures while referring serious cases to the Global Hospital Institute of Ophthalmology.

WHY | These outposts help disseminate awareness about the eye care services offered by the parent organisation and facilitate post-operative eye check-ups for patients living afar.

MODUS OPERANDI | The centres are run on a no profit-no loss basis. Patients are charged nominally for the procedures. Post-operative checks are conducted for free.

WHEN | Since January 2010 (Raniwara), January 2011 (Kalandri), July 2016 (Pindwara)

DONORS | Orbis Inc. supported the creation of the Raniwara centre; PC Parmar Foundation supported the Kalandri centre; Swaran Singh Sian from UK sponsored the centre in Pindwara.

BENEFICIARIES | 6,873 eye checks, including 897 children. 4,088 spectacles prescribed, 379 post-op follow ups.



The Pindwara Vision Centre open for business

Branches



Radha Mohan Mehrotra Global Hospital Trauma Centre

Radha Mohan Mehrotra Global Hospital Trauma Centre is primarily a provider of emergency trauma and medicine health services at Abu Road. Since 2007 it has evolved into a 36-bed hospital offering multi-speciality consultations.



The busy dental clinic



The dialysis facility



The CT Scan facility

Between April 2019 and March 2020, the unit logged 41,684 walk-ins

...and 4,870 patients were hospitalised



35% female, 65% male

26% paid, 68% concession, 6% free

60% for dialysis, 23% for medicine, 17% for surgical disciplines

Out-patients

-Casualty, 18%
-Counselling, 1%
-Dentistry, 12%
-Dietetics, 1%
-ENT, 18%
-Gynaecology & Obstetrics, 2%
-Homoeopathy, 1%
-Medicine, 27%
-Neurosurgery, <1%
-Orthopaedics, 12%
-Pain management, 1%
-Physiotherapy, 2%
-Surgery, 5%

ENT, 12%, 13%

Gynaecology & Obstetrics, 1%

Orthopaedics, 16%, 39%

Pain management, 28%

Surgery, 43%, 48%

Operated patients



Major operations
Minor operations

Diagnostics

 Colour Doppler 

ECG 

Treadmill Test 

 CT scan 

Sonography 

Xray 

 Pathology 

Free diagnostics

Paid diagnostics

”

The Thalassemia Day Care Centre will prove to be a blessing for Sirahi district.

PAYAL PARASRAMPURIA
Chief, District Sirahi

Rotary International Global Hospital Blood Bank

The sole not-for-profit Regional Blood Transfusion Centre in Rajasthan, this blood bank is mandated to promote voluntary blood donation, to separate into components at least 50% of the blood it collects and to solve technical and clinical problems of the region it oversees. Last years salient achievements:

6,681 donor bleeds, 100% voluntary

↳ 47 donation drives, 3,657 units

↳ 353 units used as whole blood
6,328 processed into plasma, packed cells

↳ 7,275 units issued, 25% free,
612 to the Thalassemia Day Care Centre



Dr Sharad Mehta, senior ENT consultant surgeon presented Devji Patel, member of parliament, Jalore constituency, with a certificate for donating blood; quality manager blood bank & pathology Dharmendra Singh and manager admin Mohinder Paul look on

Co-organisers

- Aadivasi Samaj
- Agarwal Samaj
- Ambedkar Seva Samiti
- Bajrang Dal
- BAPS School
- Bhagwat Seva Samiti
- Bhansali Polymer
- Bhartiya Janta Party
- Prajapita Brahma Kumaris
- Ishwariya Vishwa Vidyalaya
- Chhipa Samaj
- Crossfit Gym
- HDFC Bank
- JK Lakshmi Cement
- Lions Club
- Maa Vaishnav Devi Seva Samiti
- Madhav University
- Mahakali Samiti
- Muslim Waqf Committee
- North Western Railway Employees Union
- Rajasthan Parvasi Sangh
- Raktadan Sewa Samiti
- Shri Radhe Shyam Mitra Mandal
- Shyam Mitra Mandal
- SMCC College
- Sudhir Jain & Hotel Association Mt Abu
- Team Bhagat Singh and Saurya Mitra
- USB Group of Colleges
- Vishwa Hindu Parishad
- Yuva Committee Muslim Samaj

Shri Jaisinh Jain Dispensary

Established in February 2013, this family clinic caters to residents of Delwara, a suburb of Mt Abu. Delwara lacks a health service, so this facility is invaluable. The service is offered two hours in the morning and evening Monday through Saturday,

Sudhir Jain and Shailesh Jain, Mt Abu residents, helped establish the clinic in premises owned by the famous Dilwara Jain temple (Digambar Jain Mandir), in memory of their late father Shri Jaisinh Jain. They also partially sponsor the free medicines dispensed to needy patients.

Last year, 5,747 persons were served through this clinic.



Dr Sumangala Hosamath, yoga therapist & clinical associate, sees a patient in the clinic

G V Modi Rural Health Care Centre

This clinic offers medical and geriatric consultations and counselling.

Last year, 360 walk-ins consulted the doctor. He additionally served 291 senior citizen residents of Shivmani Geriatric Home (see next heading).

4,415 senior citizens attended events at various locations across India.

494 persons availed of the bone mineral density checks while 32 underwent the biothesiometer test.



Dr Mahesh Hemadri, medical officer & incharge, gets his audience exercising at an event!

Shivmani Geriatric Home

A residential facility for the elderly, currently occupied by 93 individuals.

Shivmani residents celebrate festivals, enjoy spiritual discourses, and avail an array of facilities on campus such as a dietician for consultations, a physiotherapist for fitness/physiotherapy sessions, consultations with a geriatric care specialist, etc.



Residents enjoy the library

Brigadier Vora Clinic & Jyoti Bindu Diagnostic Centre

A family clinic offering consultation with a general practitioner (GP), elementary diagnostics and consultations with visiting specialists.

Last year, 981 male patients, 843 female patients and 471 children sought the services of the GP. Blood investigations numbered 362 and 142 urine exams were done.

The panel of visiting specialists included dermatologist Dr G M Vinod, diabetologist Dr Sunil Maniyar, gynaecologist Dr Rasilaben Patel, ophthalmologist Dr Ketan Patel, paediatrician Dr Amishaben Maniyar and surgeon Dr J M Dave.

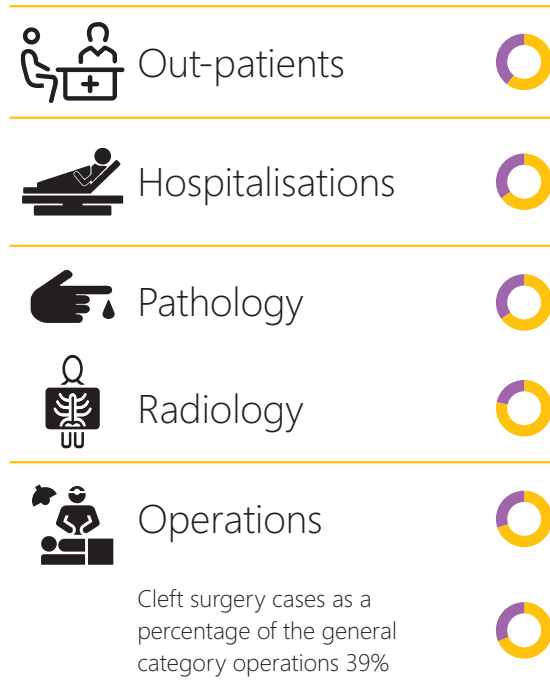
Specialist consultations numbered 650, and included 167 dermatology, 102 diabetes, 113 gynaecology, 243 ophthalmology and 25 paediatric consultations.



The GP Dr Karan Chauhan sees a patient

BSES Municipal General Hospital, Mumbai

BSES Municipal General Hospital is a joint venture of the Municipal Corporation of Greater Mumbai, Brihanmumbai Suburban Electricity Supply and Global Hospital & Research Centre. It is a 100-bed hospital including 33 general beds and 33 intensive care unit beds. Here are a few glimpses from last years' services.



Trustee Dr Ashok Mehta with others at the opening of the dialysis day care centre



Trustee BK Yogini with members of the Rotary Club of Bombay Airport, donors of materials for the fight against Covid-19



The opportunity to consult a doctor for free means a lot to underprivileged people

General patients

Paid patients

Summary

General patients availed a big slice of the hospital's services last year as the above charts show. In the out-patient department, general patients consult doctors and avail diagnostic facilities for free. Admitted general patients are either treated for free (indigent patients) or for a heavily subsidised charge.

Some of the general patients who underwent operations were beneficiaries of the Mahatma Jyotiba Phule Jan Arogya Yojna, the health insurance scheme of the government of Maharashtra. BSES MG Hospital is mandated to treat people covered by this scheme.

A significant number of the operations done for free were cleft correction operations that were sponsored by the Stiftungen Cleft Children International, Switzerland.

The mobile clinic sponsored by Larsen & Toubro conducted 176 consultation events during the year, those beneficiaries numbered 21,534.

Prajapita Brahma Kumaris Ishwariya Vishwa Vidyalaya Shantivan campus

In the late nineties, J Watumull Global Hospital & Research Centre co-conducted two studies to assess the effect of lifestyle changes: Rajyoga meditation, exercise and a vegetarian diet on reversing coronary artery disease.

The Mount Abu Open Heart Trial and the Abu Healthy Heart Trial angiographically documented 518 patients with co-morbidities. J Watumull Global Hospital and Research Centre collaborated with the Defence Institute of Physiology and Allied Sciences (Defence Research & Development Organisation) for this project, which was sponsored by the Central Council for Research in Yoga & Naturopathy, the Ministry of Health & Family Welfare, Government of India, and the Defence Research & Development Organisation, New Delhi.

Repeat 2D Color Doppler echocardiography and repeat angiography exams helped document the positive changes in the heart from following the 3-Dimensional Healthcare Model for a Healthy Mind, Heart & Body. These were attributed to weight reduction, lowering of lipid levels, a healthy diet, exercise and the management of psychosocial

stressors through Rajyoga meditation. Interestingly, the multivariate analysis showed that the independent predictors of coronary artery disease regression were not the reduction in weight and lipid levels but the management of psychosocial stressors through Rajyoga meditation. Meditation motivated patients to adhere to the healthy lifestyle and treatment. Other benefits were better wellbeing, diabetes control with less medication, better control of blood pressure, relief from bronchial asthma, migraine, arthritis, depression, insomnia, anxiety and many other conditions. Overall, 93% patients opened their blocks in the interventional group as compared to only 13.5% in the control group.

In patients with the strongest adherence the average reduction in stenosis diameter was 18.23 absolute percentage points (29.03% relative improvement). In patients with medium adherence it was 11.85 absolute percentage points (19.10% relative improvement). The condition of patients with the least adherence worsened. More than 50% adherence to the prescribed model is essential to achieve significant regression in

diameter stenosis and in the number of cardiac events.

Since then, more than 6,500 heart patients have been able to open their blocked arteries without any Percutaneous Transluminal Coronary Angioplasty or Coronary Artery Bypass Grafting. These patients have been handheld through the lifestyle change over a seven-day residential programme held at the Prajapita Brahma Kumaris Ishwariya Vishwa Vidyalaya Shantivan campus. Last year, seven sessions were held for patients, 403 participated. Dr Satish Gupta, director, Department of Medicine and Cardiology, Radha Mohan Mehrotra Global Hospital Trauma Centre, leads this programme.

Also, during September 2019, the 3-D Healthcare Model team in association with the Prajapita Brahma Kumaris Ishwariya Vishwa Vidyalaya ran a campaign, Bye Bye Heart Attack and Non-Communicable Diseases, in 33 districts of Rajasthan. The campaign aimed at motivating people to take responsibility to heal themselves by changing their lifestyle. The campaign shared details of the patient-friendly model to open coronary blockages.

Dr Satish Gupta, director of the Department of Medicine and Cardiology at the Radha Mohan Mehrotra Global Hospital Trauma Centre, Abu Road, conducts a group support session for coronary artery disease patients



To sign up to change your lifestyle and enjoy better cardiac health, email 3dhealthcare@gmail.com

AMBULANCE

Community outreach



Community Service Project

Two doctors assisted by two attendants and two drivers run a mobile health consultation service. They visit 69 villages in tehsils Abu Road, Pindwara and Reodar in district Sirohi, a population of about 150,000, underserved by the existing health services.

Start year | 2004

Doctors on roll | Dr Ashok Dave, Dr Deepika Nandwana

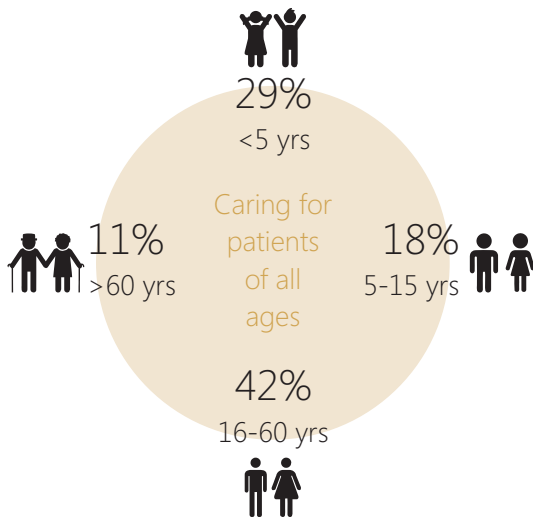
Annual tally | 28,589 patients

SPONSOR

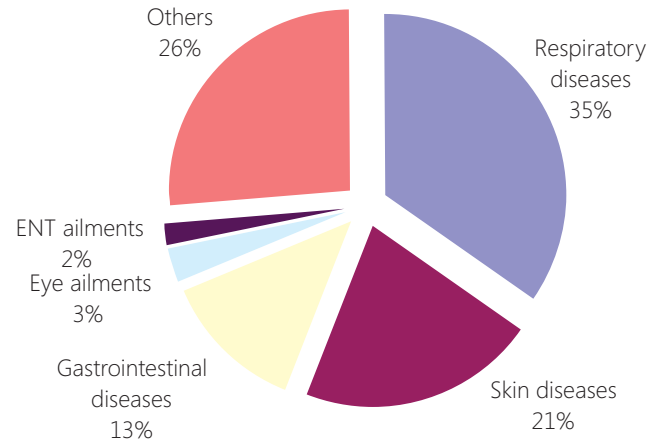


Ircon Soma Tollway Pvt. Ltd.

Patients by age



Patients by disease



How the service works, an example. Patients follow ups happen every week.



Week 1

An infant, age 1, suffered burns. Dr Ashok Dave started his treatment.



Week 2

By the second week, the blister had erupted, it was important to keep up the treatment.



Week 4

A month later, new skin was visible on the greater part of the arm, one scar remained.

Village Outreach Programme

A health consultation service for 20 villages around Mt Abu: Aarna-Hetamji, Achalgarh, Chandela (Telapurphali, Ambaveriphali, Bageri, Khadrphali), Jaidra, Jamburi, Jawaingaon, Kyaria-Takiya, Nichalagarh, Oriya, Salgaon, Shergaon-Utteraj, Siawa, Tuka, Uplagarh.

A doctor visits the villages around Abu Road, offering consultations and informally imparts essential health information. Most of those villages have no health centre staffed by a doctor. Patients are distributed medicine on the payment of Rs 10, however, destitute patients are exempt from this charge. Patients needing diagnostic investigation or other treatment are referred to the base hospitals at Mt Abu. When they step into the hospital, they are handheld through the process of consultation and hospital admission. Most are treated for free. Patients from the villages nearest to Mt Abu step into the hospital directly, where they receive the same handholding.



Dr Manisha Maindad, doctor with the Village Outreach Programme, sees patients from makeshift arrangements as in the photograph above

Start year | 1991

Doctors on roll | Dr Kanak Shrivastava, Dr Manisha Maindad

Annual tally | 8,337 patients on site, 1,705 stepped in for consultations, 174 hospital admissions

Sewing Project:

An initiative of the Village Outreach Programme

In villages Chandela (three locations) and Oriya, the VOP sustains a sewing teaching service. Some years ago the VOP had invested in creating activity rooms in those two villages, and equipped them with five machines each, which women and girls were free to use. The VOP also hired two seamstresses to come in to teach. The idea behind this project was to contribute to livelihoods by teaching women a useful skill.



Women using the sewing machines in the Village Outreach Programme activity room in village Chandela

Nutritional Project

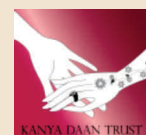
Since 1995, about 2,500 pupils of government schools in 17 villages forming the VOP circle are served a milk-based snack daily and fruit weekly during school hours to improve their nutritional status and encourage school attendance.

When funds are available, students are distributed learning aids and warm clothing, and schools are provided with extra infrastructure. Occasionally, the children are delivered informative lectures.



SPONSORS

Individual philanthropists,
Kanyadaan Charitable Trust, Hong Kong



Tuberculosis Project

Field workers posted in villages, supported by a supervisor and three doctors, identify suspect tuberculosis patients and get their sputum tested. Field workers personally visit positively identified patients to administer medicine, ensure their compliance with the six month-long treatment regimen and give them high-protein food to build their immunity and prevent relapses.

Timely detection and treatment helps check the spread of tuberculosis. Positive cases turn non-infectious a fortnight after being put on treatment. Both the Radha Mohan Mehrotra Global Hospital Trauma Centre and J Watumull Global Hospital & Research Centre are registered Designated Microscopy Centres under the Government of India's Revised National Tuberculosis Control Programme.



Project start year | 2008

Annual tally | 1,172 sputum exams; 265 positive cases; 155 cures

SPONSORS



Government of India, for the medicine



GiveIndia helps raise funds for the nutritional supplements

Keli, a 14 year old girl from village Boribhuj, was cured of tuberculosis

Flood Relief

In July 2019, about 5 million people in Assam suffered as a result of extensive flooding. Representing Global Hospital & Research Centre, volunteer pharmacologist Dr Devendra Sachdev joined a team of doctors from the Brahma Kumaris, Guwahati, to offer health consultations and distribute medicine to victims in Kamrup Rural, Darrang, Morigaon and Nalbari districts.

Dr L G Tamuli, Dr Pritti Kakati, Dr Abhijit Ghosh, Dr Tila Bora, Dr Kaberi Kakati, Dr Nagen Sharma and Dr Devender Sachdev travelled by car, bus and boat to reach far-flung areas.

The Brahma Kumaris also distributed relief materials to the victims.



Dr Devendra Sachdev (sitting, centre, wearing spectacles) sees patients

Research



Summary

At both J Watumull Global Hospital & Research Centre and the Global Hospital Institute of Ophthalmology, research receives a shot in the arm from the DNB programmes in Family Medicine and Ophthalmology that require candidates to conduct research. Additionally, an active team of researchers at the Saroj Lalji Mehrotra Global Nursing College, Talhati, Abu Road, promotes, conducts and publishes research.

6

NEW PROJECTS

Functional outcome of proximal femoral nail in hip fractures among elderly (> 70 years) patients
Dr Nithin Sunku, Consultant Orthopaedics & Joint Replacement Surgeon

A pilot study on a residential, group-based, intensive, holistic lifestyle intervention on Type 2 diabetes patients in Bhavnagar and Nadiad, Gujarat, in 2019
Dr Shrimant Sahu, Anaesthetist & Diabetologist

Management of foreign bodies landed at different eye ports
Dr Prateek Jain, Registrar, Ophthalmology, Dr Anshuman Pattnaik, DNB Ophthalmology resident

Limbal to limbal corneal tear: a case series
Dr Prateek Jain, Registrar, Ophthalmology, Dr Anshuman Pattnaik, DNB Ophthalmology resident

Study of epidemiological characteristics, predisposing factors and etiological diagnosis of infective keratitis in south west Rajasthan
Dr Poulami Pal, DNB Ophthalmology resident, Guide: Dr V K Sharma

Study of central corneal thickness changes following 6mm manual small incision cataract surgery using intratunnel phacofracture technique
Dr Anshuman Pattnaik, DNB Ophthalmology resident, Guide: Dr Sudhir Singh

12

COMPLETED PROJECTS

Prevalence and risk factors of hypertensive retinopathy in south western region of Rajasthan
Dr Pooja Shinde, DNB Ophthalmology resident, Guide: Dr V K Sharma

Clinical study of surgically induced astigmatism in various size frown incisions in intratunnel phacofracture manual small incision cataract surgery
Dr Nimesh Purohit, DNB Ophthalmology resident, Guide: Dr Sudhir Singh

A correlational study to assess the impact of the nurse supervisor's leadership style on job satisfaction of staff nurses working in select private hospitals of Abu Road, with a view point to assess the staff nurse's perception of their nurse supervisor's leadership styles
Sudhanjali Behra, Lecturer

A pre-experimental study to assess the effectiveness of a planned teaching programme on knowledge regarding menstrual hygiene among adolescent girls (12-16 years) studying in select government schools of Abu Road, Rajasthan
Komal Gupta, Uttam Chand, Divya, Guide: Shashibala Gupta

A study to assess the causative factors and level of anxiety regarding labour process among primi mothers at select hospitals in Abu Road
Amita, Amit, Preeti, Komal Rana, Guide: Banupriya

Impact of quality of nursing work life on turnover intention among staff nurses working in select private hospitals of south western Rajasthan
Swati, Ranjit, Hitesh, Guide: Chris Thomas

A descriptive study to assess the knowledge on road safety measures among children studying in 5th standard in select government schools of Abu Road, Rajasthan

Harshit, Digvijay, Pankaj, Guide: Maneesh Sharma

A descriptive study to assess the level of knowledge regarding tobacco and its ill effects among adolescents of the 13-17 year age group in select government schools in Abu Road

Reshma, Vijayalakshmi, Jignesh, Guide: Harish Nair

A study to assess the effectiveness of a structured teaching programme on essential newborn care knowledge among primi antenatal mothers

Kamlesh, Deepika, Priyank, Vidya, Guide: Nidhisha, Sudhanjali

A cross-sectional study of urolithiasis patients coming to a rural hospital of south west Rajasthan

Dr Nikhil Gusain, DNB Family Medicine resident, Guide, Dr Somendra Mohan Sharma, Co-guide: Dr Ananda B

Effect of Rajyoga meditation-based lifestyle intervention on HOMA index in diabetic and non diabetic cardio vascular disease patients

Dr Kuljeet Singh, DNB Family Medicine resident, Guide: Dr Satish K Gupta, Co-guide: Dr Anil Kumar Chawla

Evaluation of Rajyoga meditation-based lifestyle intervention on monocytes HDL ratio in angiographically documented coronary artery disease patients

Dr Md Akhlaqur Rahman, DNB Family Medicine resident, Guide: Dr Satish K Gupta, Co-guide: Dr Anil Kumar

5

RESEARCH PUBLICATIONS

Effectiveness of gratitude intervention on select mental health indicators: A systematic review and meta-analysis

Chris Thomas, International Journal of Multidisciplinary Educational Research, December 2019; Volume 8, Issue 12(2), 40-49 (UGC approved journal, impact factor: 6.514)

Motivational programme for nursing students: A review article

Maneesh Kumar Sharma, International Journal of Multidisciplinary Educational Research, December 2019, Volume 8, Issue 12 (1), Page # 85-97, UGC approved journal, impact factor 6.514

Simultaneous bilateral total knee arthroplasty outcomes analysed for present day practice

Dr Nithin Sunku, Journal of Orthopaedic Bone Disorders 2019, 3(4): 000192

Periprosthetic joint infection—current scenario on management

Dr Nithin Sunku, MOJ Orthopaedics Rheumatology Journal 2020; 12(1):20

A cross sectional study of urolithiasis patients coming to a rural hospital of south west Rajasthan

Nikhil Gusain, Somendra Mohan Sharma, Ananda B, N Upadhyaya, Indian Journal of Preventive Medicine

2

ACADEMIC PUBLICATIONS

Simultaneous bilateral knee replacement—functional results

Popliteal artery thrombosis—post TKR

World Orthopaedic Congress, International Society of Orthopaedic Surgery and Traumatology, Oman, Dr Nithin Sunku

A correlational study to assess the impact of nurse supervisors leadership style on job satisfaction of staff nurses working in select private hospitals of Abu Road with a view to assess staff nurses perception of their nurse supervisors leadership styles

1st National Conference of the Clinical Nursing Research Society, Saroj Lalji Mehrotra Global Nursing College, Sudhanjali Behra

2

SCIENTIFIC CONFERENCE RESEARCH PRESENTATIONS

Preceptorship model to bridge the gap between nursing theory and practice
Chris Thomas, Centre of Continuing Nursing Excellence Digest, CCNE Publishers, June 2019, Volume 4.4

Academic procrastination: An issue to address in nursing education
Maneesh Kumar Sharma, Centre of Continuing Nursing Excellence Digest, CCNE Publishers, July 2019, Volume 5.1

10

SCIENTIFIC CONFERENCE ACADEMIC PRESENTATIONS

Anterior sub-tenon's anesthesia: our new local anesthesia technique in ophthalmic surgery [anterior segment]
AV patterns management [anterior segment]
Capsulorhexis techniques for white cataracts [anterior segment]
Single site combined SICS and trabeculectomy with releasable sutures: my technique [anterior segment]
Inferior oblique muscle weakening procedures
Surgical induced multifocal vision by monofocal IOL [anterior segment]
Illustrated inferior oblique muscles weakening procedures [anterior segment]
All India Ophthalmology Society Conference 2020, Gurugram, Dr Sudhir Singh

Clinical supervision (as a resource person)
National Workshop on Assessment and Evaluation in Nursing Education, Joitiba Nursing College, Mehsana, Chris Thomas

Developing the fair witness by remaining open and working with triggers in conflict situations
National Webinar on Compassionate Listening, JIET College of Nursing, Jodhpur, Chris Thomas

Leadership in nursing education and research
National Webinar on Exploring leadership in health care possibilities, Kasturba College of Nursing, Bhopal, Chris Thomas

5

JOURNAL EDITORIAL BOARD MEMBERSHIPS

Dr Nithin Sunku, Integrative Trauma and Emergency Medicine, published by Scient Open Access
Dr Nithin Sunku, Journal of Orthopaedic and Trauma Care, published by eScientific Publishers
Dr Nithin Sunku, Acta Scientific Orthopaedics
Dr Nithin Sunku, Journal of Case Reports and Images in Orthopaedics and Rheumatology, Edorium Journals
Dr Nithin Sunku, EC Orthopaedics, published by eCronicon



Education



Global Hospital School of Nursing/ Saroj Lalji Mehrotra Global Nursing College



Global Hospital School of Nursing offers a three year diploma in General Nursing & Midwifery since 2006 (students referred to as GNM students).

Saroj Lalji Mehrotra Global Nursing College offers a four year graduate programme in nursing since 2011 (students referred to as BSc students).

In 2019, 81 students were on the rolls of the school, 109 students were on the rolls of the college. Twenty three school students and 15 college students graduated during the year.

The nursing campus established with the support of the Sar-La Education Trust

Inclusive education

Three GNM students were provided education loans and three high-performers won awards.

Zorg van de Zaak Foundation, a Dutch NGO sponsored five students for the diploma course: three girls from socio-economically weak families and two handicapped young adults, a boy and a girl.

Four BSc students were provided education loans and one was provided financial assistance.



Trustee & medical director Dr Partap Midha felicitated a topper in the presence of the principal, Saroj Lalji Mehrotra Global Nursing College Shashi Bala Gupta and others



The ceremonious lamp lighting held for the new batch

Graduate nursing students are exposed to dummies and mannequins

Inspired to study nursing?

Address inquiries for the diploma nursing programme to:

Mahesh Chand Goyal, principal, Global Hospital School of Nursing, email: ghsn.abu@gmail.com

Address inquiries for the graduate nursing programme to:

Shashi Bala Gupta, principal, Saroj Lalji Mehrotra Global Nursing College, email: slmgnc.raj@gmail.com



Post graduate degree in Ophthalmology

Global Hospital Institute of Ophthalmology has been a National Board of Examination accredited institute for post graduate training in ophthalmology since 2013. The institute offers two primary DNB in Ophthalmology seats for candidates holding a graduate degree in medicine (MBBS). This is a three year course. Two secondary seats are on offer for candidates holding a Diploma in Ophthalmology (DO/DOMS). This is a two year course.

Dr Anshuman Pattnaik and Dr Poulami Pal were signed on for the programme during the reported year.

They joined second year residents Dr Pooja Shivaji Shinde and Dr Nimeshbhai Bhalaji Purohit, and final year residents Dr Vineet Ashish and Dr Swati Goel.

Dr Vineet Ashish would be employed for the Sri Adinath Fateh Global Eye Hospital in Jalore after his course is completed.



DNB Ophthalmology residents Dr Poulami Pal and Dr Pratik Jain discuss a case

Inspired to study ophthalmology?

Address inquiries for observerships, internships and training to:

Manisha Ligade, deputy manager, HR, email: ghrchrd@gmail.com

Diploma in Ophthalmic Techniques

Global Hospital Institute of Ophthalmology offers a three year diploma in Ophthalmic Techniques conducted in affiliation with the Federation of Ophthalmology and Optometry Research and Education College, New Delhi. The institute had 37 students on its rolls last year. Thirteen final year students successfully found employment. One student was absorbed by the institute, and posted in Abu Road. Four new students were admitted.

Diploma students prepare pre-operative patient documentation



Address inquiries for this diploma course to Dinesh Singh, eyecare manager, email: ghioabu@gmail.com



Diploma students use the Schiötz equipment to check intra ocular pressure



A diploma student uses the non contact tonometer to check intra ocular pressure

Student internships, observerships & training

J Watumull Global Hospital & Research Centre offers students (and aspiring students) of medicine and allied streams training opportunities as well as short-term internships and observerships.

Last year the hospital hosted six students from the Child Family Health International, a USA based NGO for exposure to the working of the hospital. Natalie Anne Sarver and Richa Bisht visited from June 10 to 14; Priya Nair, Andrew Kowk and John Dinelli visited from July 23 to 26; and Kaylan Gee visited from February 17 to 20.

Mavril Rupal Sharma, a high school student from Sheffield Park Avenue, NC, USA, visited for clinical exposure from June 19 to 27.

Simran Singhla, a student pursuing a graduate programme in psychology at the Kamla Nehru College, University of Delhi, visited to observe patient care from July 1 to 18.

Varsha Soni, a student pursuing a graduate programme in pharmacy at Madhav University, Abu Road, visited to observe the working of the medical store from June 7 to July 30.

Dr Lillian Diaz, a paediatrician and post graduate in Ayurveda and Naturopathic Medicine from Argentina, visited to observe the hospital working from October 13 to 28.

Dr Sandra Russo, a pharmacist, yoga instructor and bioneuroemotion therapist, visited to observe the hospital working from October 13 to 28.

Krishna Elchha, a final year student of a graduate programme in microbiology at the Sant Singaji Institute of Science & Manage-



Charles Kind from UK outside the hospital. He visited for an observership.

ment, Devas, Madhya Pradesh, interned from September 13 to November 9.

Ayush Garg, a business administration student at Christ University, Bengaluru, volunteered at the reception/front desk from November 2 to 4.

Dr Divisha Jain, a freshly qualified graduate in dental studies from the Pacific Academy of Higher Education & Research University, Udaipur, visited to observe the working of the department of dentistry from August to February.

Meet Khastariya, a second year student of medicine at GMERS Medical College,

Ahmedabad, visited to observe patient care from February 6 to 9.

Charles Kind and Lauren Davis, medical students at Oxford University, UK, underwent an elective placement from February 10 to March 3.

Olga Catharina Everts from Netherlands visited to observe the working of the department of ayurveda from March 11 to 17.

Arshia Mahajan, a student pursuing ayurveda medicine at the Abhilashi University in Mandi, Himachal Pradesh, underwent a six month internship from January 20 to July 17.

Contribute to the hospital activities

Find us on www.GiveIndia.org

Donate via www.ghrc-abu.com (powered by Razorpay / Paypal)

Transfer via NEFT (Indians) or telegraphic transfer (overseas donors)

Email mail@ghrc-abu.com for details



Training & development

Summary

Training and development is focused on giving employees opportunities to learn about latest technologies and procedures, and update their skills. While internal training and development opportunities are ongoing, staff are additionally encouraged to attend external conferences and workshops.



Staff nurse Kavita Maske attended an international conference on peri-operative nursing in Jodhpur



Consultant orthopaedics & joint replacement surgeon Dr Nithin Sunku attended the 40th World Orthopaedic Congress of the International Society of Orthopaedic Surgery and Traumatology in Oman



Communication skills training in the Learning Lab

Internal events

- Weekly clinical department presentations and journal article reviews (28)
- Guest lectures (12)
- Special Continuing Medical Education sessions (2)
- Lectures on biomedical waste and infection control (14)
- Basic life support training sessions by nurse educator
- Communication skill workshops held in the Academy For A Better World, Mt Abu (2)
- Nursing Continuing Medical Education sessions (50)
- Webinars (1)

Numbers of staff supported for external events

- Staff members supported to attend external conferences (22)
- Staff members supported to attend external training programmes (2)
- Staff members extended support for pursuing higher education (2)



I express my respects and regards to all [those] who accomplished this great work.

PRATAP CHANDRA SARANGI
Minister of State, Animal Husbandry, Dairying and Fisheries and Micro, Small and Medium Enterprises, Government of India

Accreditation with standards certifying body

J Watumull Global Hospital & Research Centre achieved Entry Level certification under the National Accreditation Board of Hospitals (NABH) on April 28, 2019. This certification would remain valid until April 28, 2021. With this, the hospital is considered Pre-Accredited, one step closer to becoming a fully accredited hospital. In India, only 707 hospitals are fully accredited.

NABH certification helps staff become more conscious of policies and standard operating procedures (SOPs) aiming at patient safety and the quality of services. Since the certification, the 12 committees constituted to implement the standards in the hospital have been interacting as per the NABH meeting calendar schedule. Four types of mock drills (code blue, code yellow, code pink and code red) and clinical as well as non-clinical training have become an ongoing affair. The focus is also on ways to expand the scope of the policies and SOPs.



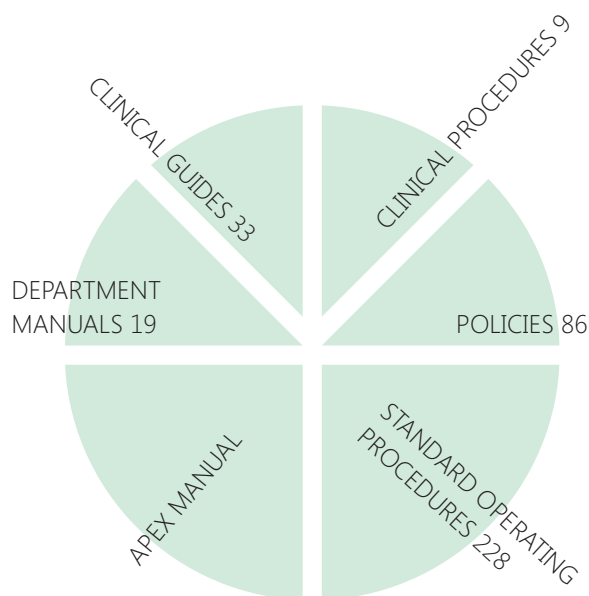
Basic life support training in progress



Biomedical waste management training

Key components of the implementation

↳ Textual guidelines ↳ 12 committees



- Bio Medical Waste Management & Infection Control Committee
- Patient Safety & Quality Improvement Committee
- Medical Audit Committee
- Facility Management & Safety Committee
- Medical Record Committee
- Drugs & Therapeutics Committee
- Blood Transfusion Committee
- Disaster & Emergency Preparedness Committee
- Research Ethics Committee
- Scientific Research Committee
- Grievance Handling Committee
- Internal Complaints Against Sexual Harassment Committee

Values in Healthcare - A Spiritual Approach

Values in Healthcare: A Spiritual Approach (VIHASA) is a modular development programme for health professionals, created by the UK-based Janki Foundation for Spirituality in Healthcare, a not for profit that channels resources to help sustain the work of the hospital.

Through experimental exercises and opportunities for reflection and self enquiry, VIHASA helps healthcare professionals identify their core values and insights that can help them deliver the best possible care to patients and at the same time feel enriched by their work.

VIHASA training includes lectures and workshops ranging from 2 hours to 4 days. Participants can undergo facilitator training, which empowers their own practice and prepares them to run the programme in their organisations.



Group photograph of participants of VIHASA training at Biratnagar, Nepal



Group photograph of participants of VIHASA training at Mt Abu

Events

When ~ What ~ Where ~ Number of participants

- April '19, Trainers Training, Shantivan, Abu Road, 200
- May '19, Counselling and Communication Skills, Biratnagar, Nepal, 200
- July '19, Training, Nagpur, 200
- July '19, Reunion, Manesar, Delhi, 80
- September '19, Training, Bhopal, 200

Calling sponsors

For more details, drop us a mail at mail@ghrc-abu.com

Or call: Dr Partap Midha, Medical Director / Trustee
0091 2974 238347/8/9

Or write: PO Box 35, Mt Abu, Rajasthan 307501

Equipment wish-list

Here is a list of equipment we are presently missing with our preferred brand, in case you would like to surprise us with a gift:

J Watumull Global Hospital & Research Centre

- ECG machine, Philips TC20, Rs 1,65,000
- TMT machine, Wipro GE Cardiosoft, Rs 5,32,000
- Spirometer, Rs 1,30,000
- Patient monitor, GE B125, Rs 2,45,000
- Pulse oximeter, BPL D-lite, Rs 42,000
- Laprosopy instrument, Karl Storz, 5mm, 10mm, Rs 2,50,000
- EEG machine, GE, Rs 4,00,000
- Pulse oximeter (paediatric-neonatal), Rs 35,000
- Cautory machine, Valleylab, Rs 5,00,000
- Chest vibrator, Biotech, Rs 52,000

- Ortho drill + saw system (cordless), Stryker/Zeamer, Rs 7,50,000
- ABG machine upgradation, Opti Medical, Rs 3,00,000
- Non contact tonometer, KLB, Rs 4,50,000
- Medical recorder, Sony, Rs 4,00,000
- Shock wave therapy machine, BTL 5000, Rs 10,00,000

Radha Mohan Mehrotra Global Hospital Trauma Centre

- Computerised radiography system, Carestream, Rs 10,00,000
- Film printer, Carestream, Rs 4,50,000
- Patient monitor, Mindray, Rs 80,000
- Cautery machine, Valleylab, Rs 5,00,000
- Neuro microscope, Leica, Rs 35,00,000
- Binocular loupe with light, Rs 52,000
- Autoclave (Class B), Rs 1,10,000

Global Hospital Institute of Ophthalmology

- Yag laser, Zeiss/KLB, Rs 16,00,000
- Tonometer, iCare, Rs 2,50,000
- Operating microscope, Zeiss/Leica, Rs 13,00,000
- Patient monitor, GE/Philips, Rs 2,45,000
- OT table, NeoTech, Rs 65,000
- Refraction unit, NeoTech, Rs 1,00,000
- Autoclave (Class B), Rs 1,10,000

Global Hospital Nursing School/ Saroj Lalji Mehrotra Global Nursing College

- Boys' hostel: Rs 100,00,000 (per floor x 4 floors)

Consultants & doctors



J Watumull Global Hospital & Research Centre, Mt Abu

Administrative Doctors

Dr Mehta, Ashok, Honorary Medical Director (& Trustee)
Dr Midha, Partap, Medical Director (& Trustee)

Consultants

Dr Ananda B, Radiologist
Dr Bhoj, Tejal, Junior Consultant, Surgery
Dr Batra, Puneet, Orthodontist (visiting)
Dr Chawla, Anil, Senior Consultant Physician
Dr Doshetty, Manjunath, Nephrologist (visiting)
Dr Garg, Rajinder Prashad, Consultant Physician
Dr Ghatoda, Gurcharan Singh, Anaesthesiologist (visiting)
Dr Gupta, Pankaj, Paediatrician
Dr Kadel, Kailash, Consultant Orthopaedic Surgeon
Dr Khandelwal, Narayan, Senior Orthopaedic Surgeon (visiting)
Dr Kothari, Dilip, Consultant GI, General & Laparoscopic Surgeon
Dr Malu, Anand Narayan, Nephrologist (visiting)
Dr Mehta, Sharad, Senior Consultant ENT Surgeon
Dr Mevada, Keyur, Oral & Maxillofacial Surgeon
Dr Mistry, Saurav, Orthodontist (visiting)
Dr Patel, Nikhil, Senior Consultant Neuropsychiatrist
Dr Patil, Laxmi, Dental Surgeon
Dr Sahu, Shrimant, Anaesthetist & Diabetologist
Dr Sajjanshetty, Jagadevi, Senior Consultant Anaesthesiologist
Dr Singh Saurabhi, Consultant, Obstetrics & Gynaecology
Dr Singh Sudhir, Senior Consultant Ophthalmologist
Dr Singhal, Brijesh, Urologist (visiting)
Dr Sukhsohale, Sachin, Physician & Intensivist
Dr Upadhyay, Niranjana, Senior Dental Surgeon

Senior Doctors / Registrars

Dr Chawla, Shashi, Senior Medical Officer
Dr E Archana, Dental Surgeon
Dr Sharma, Murlidhar, Senior Medical Officer
Dr Shrivastava, DK, Senior Medical Officer
Dr Shrivastava, Kanak, Senior Medical Officer & Chief, Village Outreach Programme

Medical Officers/Clinical Associates

Dr Agrawal, Himanshu, Resident Medical Officer
Dr Hosamath, Sumangala, Yoga Therapist &

Senior Clinical Associate
Dr Maindad, Manisha, Medical Officer, VOP
Dr Mahajan, Arshia, Junior Clinical Associate
Dr Sankhala, Ketan Kumar, Resident Medical Officer
Dr Sonar, Savita, Clinical Associate, Department of Diabetology
Dr Upadhyaya, Naba Jyoti, Senior Clinical Associate, Surgery Department
Dr Vasoya, Pooja, Resident Medical Officer
Dr Wargantiwar, Vaibhavi, Clinical Associate

Alternative Therapists

Dr Dharamthok, Ramesh, Magneto Therapist
Dr Mehta, Pushpa, Honorary Homeopathic Physician (visiting)
Dr Mehta, Yogesh, Honorary Homeopathic Physician (visiting)
Dr Dave, Prakash, Ayurveda Specialist

Radha Mohan Mehrotra Global Hospital Trauma Centre, Abu Road

Consultants

Dr Bhansali, Anil Kumar, Medical Superintendent & Chief Consultant Surgeon
Dr Bhansali, Kusum, ENT Specialist
Dr Chalana, Pathologist & Incharge, Blood Bank Services
Dr Chauhan, Prakash, Paediatric Orthopaedic Surgeon (visiting)
Dr Deedwania, Prem, Anaesthetist
Dr Gupta, Satish, Director, Department of Medicine & Preventive Cardiology
Dr Kaur, Rajbir, Dental Surgeon
Dr Lakhotia, Rahul, Anaesthesiologist & Pain Management Specialist
Dr Mishra, Kanaklata, Obstetrics & Gynaecologist
Dr NS Girish Kumar, Dental Surgeon
Dr Sekhar, Amitendu, Consultant Neurosurgery (visiting)
Dr Singh, Harpal, Radiologist & NABH Accreditation Coordinator
Dr Sunku, Nithin, Consultant Orthopaedics & Joint Replacement Surgeon
Dr Tumma, Roja, Consultant Radiologist & Deputy Director

Doctors

Dr Das, Rajat, Senior Medical Officer & Additional Blood Bank Officer
Dr Krupakar, Hari, Senior Medical Officer
Dr Raja, Ravi, Resident Medical Officer
Dr Shah, Rupal, Consultant Psychologist

Clinical Associates

Dr Patel, Dignesh, Clinical Associate
Dr Purohit, Nilesh, Clinical Associate
Dr Sharma, Giriraj Prasad, Senior Clinical Associate
Dr Verma, Hemant Kumar, Clinical Associate
Dr Yadav, Pragya, Clinical Associate

Global Hospital Institute of Ophthalmology, Abu Road

Consultants

Dr Bhatnagar, Vishal, Medical Superintendent & Senior Consultant Ophthalmologist
Dr Bhojwani, Deepak, Vitreoretinal Surgeon (visiting)
Dr Laad, Seema, Consultant Ophthalmologist
Dr Nandwana, Chandresh, Paediatric Ophthalmologist
Dr Sharma, Aditya Vikram, Vitreoretinal Surgeon (visiting)
Dr Sharma, Vinod Kumar, Senior Consultant Ophthalmologist

Registrar / Senior Resident

Dr Jain, Prateek, Junior Consultant, Ophthalmology
Dr Kolte, Ankush, Registrar, Ophthalmology
Dr Shalini, Junior Consultant, Ophthalmology

G V Modi Rural Health Care Centre, Abu Road

Dr Hemadri, Mahesh, Medical Officer & Incharge

Community Service Programme

Dr Dave, Ashok, Clinical Associate & Coordinator
Dr Nandwana, Deepika, Medical Officer

Sri Adinath Fateh Global Eye Hospital, Jalore

Dr Dhaked, Yogendra Singh, Ophthalmologist

Brigadier Vora Clinic & Jyoti Bindu Diagnostic Centre, Baroda

Dr Chauhan, Karan, Family Physician (part-time)

*In alphabetical order as on 31.7.2020



Equipment upgrades



Fundacion Ananta, Spain,
general sustenance



IndiaCare, Germany,
general sustenance



Radha Mohan Mehrotra Medical Relief Trust,
trauma care



Sar-La Education Trust,
nursing education



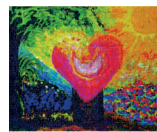
Sitaram Jindal Foundation,
general sustenance



Wilde Ganzen,
air-conditioning



Stichting Global Hospital Nederland,
Holland,
air-conditioning



Point of Life Inc,
phaco emulsification system



JASHAN JEWELS
Jashan Jewels,
vitrectomy machine



Royal Danish Consulate General Mumbai,
building extension



Brahma Kumaris World Spiritual Organisation,
general sustenance



The Janki Foundation for Spirituality in Healthcare,
general sustenance



Stiftungs Cleft Children International,
cleft operations

Family of Bhavini Patel Prakash Sakraney Rani Kasatri and family Swaran Singh Sian Sapat International

J Watumull Global Hospital & Research Centre

- Department of Anaesthesia
 - Anaesthesia workstation
- Department of Dentistry
 - Ceramic press furnace
- Department of ENT
 - Audiometer
 - Bronchoscope
- Department of Fitness
 - Commercial grade treadmill
- Intensive Care Unit
 - Ventilator
 - Transport ventilator
 - Monitors
 - Central nursing station
- Ophthalmology
 - Phaco emulsification system
- Orthopaedics
 - Orthopaedic drill
- Department of Surgery
 - Gastro videoscope
- Services: Air-conditioning
 - Air-handling unit

- Air-cooling condensing unit
- Services: Laundry
 - Washing machine
- Services: Transport
 - Car
 - 5-seater vehicle
- Utility: Electricity
 - 40KW solar photovoltaic uninterrupted power system
- Utility: Water
 - Solar water heating system

Radha Mohan Mehrotra Global Hospital Trauma Centre

- Department of Dentistry
 - Obturation unit
- Intensive Care Unit
 - Defibrillator
- Operation Theatre
 - LED-based light
- Pathology Laboratory
 - Microscope for histopathology

Global Hospital Institute of Ophthalmology

- Surgery
 - Vitrectomy

Global Hospital School of Nursing, Saroj Lalji Mehrotra Global Nursing College

- Teaching aids
 - Advanced skill lab
 - Audio-visual aids



Governance & financials

THE GLOBAL HOSPITAL & RESEARCH CENTRE TRUST is registered with the Charity Commissioner of Greater Mumbai. The trust is represented by 11 unrelated trustees from diverse walks of life, including:



BK Nirwair is a visionary leader with exemplary drive, dedication and meditative qualities, an inspiration for many employees of the trust's hospitals at Mt Abu and Abu Road.

Mahesh Patel is a chartered accountant and businessman with a chain of care homes in the UK. His family helped support the establishment of the hospital's Shivmani Geriatric Home.



Dr Ashok Mehta is a surgical oncologist, previously with Tata Memorial Hospital and Nanavati Hospital. Dr Mehta is honorary medical director of BSES MG Hospital, Mumbai, and J Watumull Global Hospital & Research Centre, Mt Abu.



Dr Partap Midha worked for two decades with the health department of the government of Haryana, gaining an understanding of grassroots health needs. He is responsible for the trust units at Mount Abu and Abu Road.

Kishore D Shah is a retired businessman and resident of Mt Abu since 1982. He was instrumental for aggregating the land on which J Watumull Global Hospital & Research Centre is constructed.



Jeetendra G Mody is a civil engineer with five decades of experience in developing real estate. He has helped implement trust projects involving the construction of new buildings.



Gulu Watumull assumed the place of his father, late founder trustee and businessman Khubchand Watumull. Gulu worked in the fashion industry in the US and Hawaii for some years.



Dr Banarsi Lal Sah has been associated with the Trust since its inception as honorary treasurer. Dr Banarsi is executive secretary of the Medical Wing, Rajyoga Education & Research Foundation.



BK Yogini manages 22 Rajyoga centres of the Brahma Kumaris in Mumbai. At BSES MG Hospital, she is honorary director, Administration, and a member of the Advisory Committee.

Rashmikant Acharya brings three decades of global finance and technology experience managing teams of multinational corporations in 40 countries. Previously, he was a scientist at the Indian Space Research Organisation. He also worked for aerospace programmes like B777. He is an alumnus of Indian Institute of Management, Bangalore; ESADE Business School, Barcelona and London Business School, UK.



Chetan Mehrotra is an entrepreneur and philanthropist. He manages his family charitable trusts focusing on education and healthcare since the past two decades. The trusts have supported many third party projects in the past and now have set up their own institutions in Maharashtra, Gujarat, UP, Haryana and Delhi.

Global Hospital & Research Centre (Consolidated)

Income & Expenditure Account for the year ended March 31, 2020

Expenditure	Current year	Previous year
To Amount transferred to reserve or specific fund	1,70,40,529	8,52,76,026
To Brigadier Vora Clinic, Baroda	8,50,214	6,67,653
To BSES MG Hospital, Mumbai	56,64,91,470	54,82,54,367
To GHRC CAD Project	28,05,614	35,65,048
To GHRC Education Project	6,64,778	2,96,278
To GHRC Mumbai	12,68,455	12,63,982
To GHRC Village Outreach Programme	86,82,085	80,02,289
To GV Modi Rural Health Care Clinic	2,06,467	2,00,231
To Global Hospital Institute of Ophthalmology	4,63,05,661	4,83,45,250
To JW Global Hospital & Research Centre	15,87,54,923	15,67,83,838
To RMM Global Hospital Trauma Centre	9,29,26,983	8,60,81,600
To Shivmani Geriatric Home	1,84,16,390	1,71,86,603
To Smile Train Project	59,04,267	69,30,214
To Global Hospital School of Nursing	93,24,322	92,11,682
To SLM Global Nursing College	1,32,16,032	1,33,86,773
To Sri Adinath Fateh Global Eye Hospital Jalore	63,39,678	49,94,584
	94,91,97,869	99,04,46,418
Income	Current year	Previous year
By Interest	1,35,86,465	1,20,43,998
By Dividend	1,14,330	5,66,087
By Donations in cash or kind	13,97,77,678	19,72,01,044
By Grant-in-Aid	59,21,003	40,84,611
By Income from hospital IPD/OPD receipts	70,33,89,308	66,99,67,948
By Income from other hospital receipts	4,03,39,796	4,36,73,928
By Transfer from reserve	1,03,20,085	4,37,10,319
By Deficit carried over to balance sheet	3,57,49,203	1,91,98,484
	94,91,97,869	99,04,46,418

Balance Sheet as on March 31, 2020

Liabilities	Current year	Previous year
Trust corpus fund	53,97,61,364	48,89,10,822
Other earmarked funds	24,69,16,054	44,89,56,796
Liabilities	45,85,90,099	20,71,25,203
Income & expenditure a/c	(35,81,23,407)	(32,23,74,192)
	88,71,44,110	1,14,49,92,821
Assets	Current year	Previous year
Immovable properties	12,30,94,555	34,81,36,726
Capital work in progress	33,97,626	-
Investments	1,76,81,352	1,95,43,829
Other moveable properties	22,76,45,640	-
Advances	1,46,99,246	1,40,97,586
Income outstanding	10,55,58,376	7,20,88,307
Stock & inventories	4,55,58,376	4,14,49,740
Cash & bank balances	34,95,06,621	32,73,02,982
	88,71,44,110	1,14,49,92,821

Notes to the Balance Sheet and Income & Expenditure Account for the year ended March 31, 2020

Significant Accounting Policies

Basis of preparation of financial statements:

The financial statements are prepared under Historical Cost Convention on accrual basis and under going concern assumption in accordance with the generally accepted accounting principles (GAAP). The accounting policies adopted in preparation of the financial statements are consistent with those of the previous year.

Use of estimates: The preparation of the financial statements in conformity with the GAAP requires the management to make judgments, estimates and assumptions that affect the reported amount of assets, liabilities, revenues and expenses and disclosure of an item or information in the financial statements. Management believes that the estimates used in preparation of the financial statements are prudent and reasonable. Future results could differ from these estimates.

Fixed assets & impairment of assets:

Fixed assets are capitalised at cost and are stated at historical cost. At each Balance Sheet date, an assessment is made as to whether there is any indication of impairment in the value of assets. Impairment loss is recognised whenever the carrying amount of an asset exceeds its recoverable value.

Foreign currency transactions:

Transactions in foreign currency are recorded at the rate of exchange in force on the date of the transactions. Current assets, current liabilities and borrowings denominated in foreign currency are translated at the exchange rate prevalent at the date of the Balance Sheet. The resultant gain/loss, except in cases where they relate to the acquisition of fixed assets, are recognised in the Profit & Loss Account.

Inventories: Inventories such as stock of surgical, sutures, medicines, pathology

chemical, x-ray films are valued at cost or net realisable value whichever is lower and are physically verified and certified by the management.

Investments: Investments are stated at cost.

Sundry creditors / debtors: Sundry creditors and debtors are subject to confirmation from them.

Receipts:

1. Hospital Receipts:

OPD Receipts: It is accounted on accrual basis on the date of providing hospital services/facilities.

IPD Receipts: It is accounted on accrual basis on the date of billing as and when the patient is discharged. However billing is done upto March 31 of every year.

2. Medical Stores Receipts: GHRC Medical Stores (Mt Abu), GHIO Medical Stores (Talheti) and PM Jan Aushadi Kendra: Sales is accounted at net of GST (excluding GST) and transfer to inter units is shown separately. Similarly, purchases is accounted at net of GST (excluding GST) and transferred from / to inter units is shown separately.

3. Donation Receipts are accounted on receipt basis on the date of receipt. Donation received towards specific / corpus fund is transferred to respective fund as per the direction of the donor.

4. Interests on bank fixed deposits and investments are accounted on accrual basis.

5. Grant-in-aid from the government is accounted as and when it is sanctioned and reasonable certainty of disbursement of claim.

Revenue recognition (BSES MG Hospital):

1. Medicines are sold over the counter on cash basis (Om Shanti Pharmacy).

2. General: Patient deposits (depending on decided category) are received when the patient is admitted in the hospital and the bill is updated on regular basis to calculate the due amount and the final bill is given during discharge of the patient and balance payment is received.

3. TPA/Corporate: Security deposit (depending on decided category) is received when patient is admitted in the hospital and the bill is updated on regular

basis to calculate the due amount and the final bill is given during discharge of the patient and amount is received by TPA/Corporate as per credit terms.

4. Rental, interest and dividend incomes are recognised on accrual basis.

5. Donations are recognised on cash or kind basis as under:

Donation receipts are accounted on receipt basis on the date of receipt.

- Donation received towards specific / corpus fund is transferred to respective fund as per the direction of the donor.

- Donation in kind is accounted as per cost / value available. In case no cost or value are available it is accounted at a notional value of Rs 1.

Depreciation: Depreciation on fixed assets is provided on written down value method as per rates shown against each asset as under:

> In case of assets held on April 1, 2019, for the full year

> In case of assets purchased and capitalised during the year, for half year irrespective of its date of purchase.

Contingent liabilities: Contingent liabilities are not provided in the books and are disclosed by way of notes to accounts.

Gratuity: The trust has opted for Group Gratuity Scheme with Life Insurance Corporation of India for the benefit of employees.

Contingent liabilities not provided for: Nil

Claims made by other parties not acknowledged as debt: Nil

Bank guarantee: FDR of Rs 1 lakh purchased from State Bank of India Mt Abu Branch given as bank guarantee to ECHS Regional Centre, Ahmedabad.

BSES MG Hospital v/s Labour contractors Certain contract labourers of the hospital have filed a suit in the labour court. The management of the hospital is of the view that there are no material financial implications and hence no provision is required for the same.

Dr Shashank Joshi & Others (Consumer court): A medical negligence case was filed by the wife of late Mr Mandar

Welingkar against Dr Shashank Joshi (neurosurgeon) and the hospital was made party to it as the operation was done at GHRC.

In compliance with the directions of the Honorable Mumbai High Court, a sum of Rs 99,04,670/- being 2% of the gross receipts of the year is set apart and credited to "Indigent Patients Fund" for the benefit of indigent patients to be spent in the manner specified under the scheme framed by the Honourable High Court.

Payment made to/from trustees and/or their relatives: The hospital has paid professional charges to Medical Director Dr Ashok R Mehta (Trustee) for professional services rendered by him which is considered reasonable.

In opinion of the management, the nature and the realisable value of current assets, loans and advances, in the ordinary course of business, are as stated in the books of account.

Internal audit: Internal audit of the trust units (except Brigadier Vora Clinics, Baroda) are carried out by M/s SMMP & Associates, Chartered Accountants, Mumbai. We have considered their reports for finalising the accounts. We have relied upon their audit report and statements for merging them in the main accounts.

Accounts of BSES MG Hospital: Accounts of one branch BSES MG Hospital, Mumbai, are audited by M/s N G Thakrar & Company, Chartered Accountants, Mumbai. Similarly accounts of GHRC Medical Stores, Pradhan Mantri Bhartiya Jan Arogya Kendra and GHIO Medical Stores branches at Mt Abu and Abu Road respectively are carried out by M/s SKHD & Associates, Chartered Accountants, Mumbai. We have relied upon their audit report and statements for merging them in the main accounts.

Previous years figures: The figures of the current year and previous year have been re-grouped and re-arranged wherever the necessity arises.

J Watumull Global Hospital & Research Centre, Mt Abu, and projects*

Income & Expenditure Account for the year ended March 31, 2020

Expenditure	Current year	Previous year
To Administration expenses	1,61,20,56	1,84,95,944
To Depreciation	72,88,305	93,66,838
To Education project	-	26,335
To Employment Cost	7,44,98,191	6,72,08,998
To Hospital consumables	1,52,37,156	1,54,83,659
To Insurance	6,17,088	5,86,906
To Kitchen expenses	7,24,777	5,41,544
To Medical relief & assistance	4,03,70,340	4,46,04,656
To Other consumables	20,12,173	21,44,838
To Power & fuel	1,08,06,720	96,05,682
To Repairs & maintenance	49,68,679	40,13,496
To Medical / Social project	25,56,192	25,08,564
To Rent, rates & taxes	2,08,753	2,52,754
	17,54,08,935	17,48,40,215
Income	Current year	Previous year
By Donation income	7,51,72,283	7,98,06,036
By Transfer from various funds	13,48,793	-
By Hospital receipts	7,79,07,693	7,88,01,427
By Other receipts	86,98,254	80,33,133
By Net deficit transferred to HO	1,22,81,912	81,99,619
	17,54,08,935	17,48,40,215

J Watumull Global Hospital & Research Centre, Mt Abu, and projects*

Balance Sheet as on March 31, 2020

Expenditure	Current year	Previous year
Mumbai office account	20,55,65,952	19,19,60,395
Specific reserve fund	8,30,133	8,58,500
Outstanding expenses	64,94,678	55,91,999
Sundry creditors	19,63,754	6,80,554
	21,48,54,517	19,90,91,448
Assets	Current year	Previous year
Fixed assets	9,08,19,202	7,96,96,756
Sundry debtors	29,11,007	12,86,001
Advances to creditors	15,77,473	11,34,331
Loans/advances & deposits	48,60,458	46,07,768
Investments	8,70,66,524	8,57,91,956
Income receivable	40,52,496	37,77,103
Closing stock	35,50,398	30,26,606
Bank balances	1,96,48,206	1,91,41,584
Cash balances	368,754	6,29,343
	21,48,54,517	19,90,91,448

* Also includes Smile Train Project, Village Outreach Programme, Coronary Artery Disease Regression Project

Global Hospital & Research Centre (Consolidated)

Funds Flow Statement for the year ended March 31, 2020

Sources of Funds	
Opening Balance in Cash & Bank a/c	11,18,15,754
Donation income (including FCRA fund received)	13,97,77,678
Hospital income (OPD & IPD Medical Stores)	70,33,89,308
Grant-in-aid from Government	59,21,003
Bank & other interest	1,37,00,795
Other income	4,03,39,796
Sales of fixed assets	15,76,700
Contribution to earmarked funds (including fund received under FCRA)	23,14,088
Contribution to Trust Corpus fund	5,08,50,542
Increase in current liabilities	3,97,90,851
Fund transferred from BSES MG Hospital	3,63,563
Total sources	1,10,98,40,078
Application of Funds	
Addition to fixed as sets (excluding WIP capitalised)	5,20,80,367
Capital work-in-progress	33,97,626
Investments in fixed deposits with bank	8,58,98,627
Increase in current assets	3,81,82,683
Revenue expenditure (excluding depreciation)	88,40,21,946
Total applications	1,06,35,81,249
Closing Balance in Cash & Bank a/c	4,62,58,829

J Watumull Global Hospital & Research Centre, Mt Abu, and projects*

Funds Flow Statement for the year ended March 31, 2020

Sources of Funds	
Opening Balance in Cash & Bank a/c	1,97,70,928
Donation income (including fund received under FCRA)	7,51,72,283
Hospital income (OPD & IPD)	7,79,07,693
Grant-in-aid from Government	8,79,933
Bank & other interest	58,40,213
Other income	17,93,908
Sales of fixed assets	1,84,200
Corpus fund donation transfer account	3,23,30,071
Total sources	21,38,79,229
Application of Funds	
Addition to fixed assets	1,88,84,637
Revenue expenditure (excluding depreciation)	16,81,20,630
Utilisation from specified fund	30,500
Investments in bank FD's	12,74,568
Decrease in current liabilities	21,85,879
Increase in current assets	33,66,055
Total applications	19,38,62,269
Closing Balance in Cash & Bank a/c	2,00,16,960

G V Modi Rural Health Care Centre, Abu Road

Income & Expenditure Account for the year ended March 31, 2020

Expenditure	Current year	Previous year
To Administration	44,905	22,817
To Depreciation	3,011	26,229
To Employment cost	1,50,138	1,32,301
To Medical relief & assistance	6,275	13,343
To Other consumables	1,938	1,981
To Repairs & maintenance	200	940
To Power & fuel	-	2,620
	2,06,467	2,00,231
Income	Current year	Previous year
By Hospital receipts	6,950	7,340
By Other receipts	369	352
By Net deficit transferred to Mumbai HO a/c	1,99,148	1,92,539
	2,06,467	2,00,231

G V Modi Rural Health Care Centre, Abu Road

Balance Sheet as on March 31, 2020

Liabilities	Current year	Previous year
Mumbai office control a/c	5,04,755	5,25,927
Outstanding expenses	35,705	34,480
	5,40,460	5,60,407
Assets	Current year	Previous year
Fixed assets	5,28,503	5,44,972
Cash & Bank balances	11,957	15,435
	5,40,460	5,60,407

**Global Hospital Institute of Ophthalmology,
Abu Road**

Income & Expenditure Account for the year ended March 31, 2020

Expenditure	Current year	Previous year
To Administration	18,74,593	17,30,615
To Depreciation	39,65,136	38,40,604
To Employment cost	2,31,41,123	1,90,16,281
To Hospital consumables	65,81,230	62,02,060
To Insurance	2,04,539	1,18,437
To Medical relief & assistance	68,07,354	1,21,89,138
To Other consumables	7,52,637	8,61,684
To Power & fuel	9,98,458	10,47,994
To Repairs & maintenance	11,14,609	9,84,289
To Rent, rates & taxes	2,81,966	2,37,499
To Diabetic retinopathy	5,84,017	20,94,221
-	4,63,05,661	4,83,22,821
Income	Current year	Previous year
By Donation income	17,75,820	27,20,299
By Hospital receipts	1,81,05,332	1,89,60,552
By Other receipts	59,24,295	59,80,693
By Transfer from fund	55,31,960	16,47,078
By Net deficit transferred to Mumbai HO a/c	1,49,68,254	1,90,14,200
	4,63,05,661	4,83,22,821

**Global Hospital Institute of Ophthalmology,
Abu Road**

Balance Sheet as on March 31, 2020

Liabilities	Current year	Previous year
Mumbai office control a/c	3,41,61,283	2,93,89,962
Earmarked funds	-	44,89,146
Outstanding expenses	20,87,178	20,48,041
Sundry creditors'	16,20,950	7,48,567
	3,78,69,411	3,66,75,716
Assets	Current year	Previous year
Fixed assets	2,69,80,310	2,92,56,135
Advances & deposits	4,67,300	6,02,291
Income receivable	83,86,590	50,92,269
Stock	15,34,827	8,47,495
Cash & bank balances	500,383	8,77,526
	3,78,69,411	3,66,75,716

Radha Mohan Mehrotra
Global Hospital Trauma Centre, Abu Road

Income & Expenditure Account for the year ended March 31, 2020

Expenditure	Current year	Previous year
To Administration expenses	16,27,736	22,10,404
To Depreciation	78,26,786	77,54,380
To Employment cost	3,51,48,341	3,20,41,294
To Hospital consumables	1,16,07,410	1,14,60,944
To Insurance	1,58,587	1,62,814
To Medical relief & assistance	2,47,32,599	2,05,43,621
To Other consumables	1,11,780	2,05,392
To Power & fuel	54,45,687	51,89,024
To Repairs & maintenance	45,50,222	49,17,633
To Rent, rates & taxes	1,71,940	49,696
To TB Project	15,45,895	15,46,398
	9,29,26,983	8,60,81,600
Income	Current year	Previous year
By Hospital receipts	6,17,54,232	4,34,23,932
By Other receipts	27,14,413	28,83,922
By Donation	94,98,510	49,97,646
By Net deficit transferred to Mumbai HO a/c	1,89,59,828	2,28,03,367
	9,29,26,983	7,41,08,867

Radha Mohan Mehrotra
Global Hospital Trauma Centre, Abu Road

Balance Sheet as on March 31, 2020

Liabilities	Current year	Previous year
Mumbai office control a/c	8,10,91,812	7,81,65,138
Outstanding expenses	48,54,293	42,33,647
Advances for expenses	11,40,178	12,90,039
Advance against project	-	67,889
Other credit balance	2,91,587	-
	8,73,77,869	8,37,56,713
Assets	Current year	Previous year
Fixed assets	6,56,31,425	70,014,436
Capital work-in-progress	33,03,673	-
Fixed deposits – SBI	67,00,000	4,00,000
Sundry debtors	66,59,428	67,27,243
Stock	15,70,420	12,93,352
Advance & deposits	13,65,003	12,54,596
Income receivable	1,39,749	39,552
Cash & bank balances	20,08,171	40,27,534
	8,73,77,869	8,37,56,713

Shivmani Geriatric Home, Abu Road

Income & Expenditure Account for the year ended March 31, 2020

Expenditure	Current year	Previous year
To Administration expenses	7,05,080	4,40,689
To Depreciation	35,93,697	39,14,696
To Employment cost	60,33,761	52,46,705
To Insurance	94,158	79,677
To Medical relief assistance	38,751	37,591
To Other consumables	1,68,606	1,80,695
To Power & fuel	17,17,216	16,27,652
To Repairs & maintenance	18,69,141	17,27,622
To Kitchen & canteen expenses	41,79,716	39,31,276
To Rent, rates & taxes	16,264	-
By Net deficit transfer to Mumbai Head Office a/c	2,23,439	5,85,754
	1,86,39,830	1,77,72,357
Income	Current year	Previous year
By Donation	19,31,234	28,79,488
By Other receipts	1,67,08,596	1,48,92,869
	1,86,39,830	1,77,72,357

Shivmani Geriatric Home, Abu Road

Balance Sheet as on March 31, 2020

Liabilities	Current year	Previous year
Mumbai office	3,73,83,710	3,73,15,585
Outstanding expenses	5,31,634	5,50,770
Advance for expenses	7,58,463	252,096
Geriatric patients deposits	12,78,19,460	6,30,368
Sundry creditors	3,48,452	11,87,89,691
	16,68,41,719	15,75,38,510
Assets	Current year	Previous year
Fixed assets	3,10,56,298	3,32,32,928
Fixed deposits - SBI	2,10,00,000	2,20,00,000
Fixed deposits - Axis	11,15,00,000	9,80,00,000
Fixed deposits - SBI S	1,582	1,141
Sundry debtors	3,13,271	2,31,509
Advance & deposits	2,46,678	2,56,403
Income receivable	27,23,890	38,16,529
Cash & bank balance	16,68,71,719	15,75,38,510

**Saroj Lalji Mehrotra Global Nursing College,
Abu Road**

Income & Expenditure Account for the year ended March 31, 2020

Expenditure	Current year	Previous year
To Administration expenses	9,95,331	9,50,389
To Depreciation	27,44,697	25,12,187
To Employment cost	69,70,717	70,69,384
To College consumables	8,80,695	7,95,375
To Insurance	2,84,681	71,228
To Medical relief & assistance	17,700	55,200
To Other consumables	58,878	71,323
To Power & fuel	4,30,875	4,37,278
To Repairs & maintenance	8,32,458	14,24,409
To Net surplus transferred to Mumbai HO a/c	-	58,12,726
	1,32,16,032	1,91,99,499
Income	Current year	Previous year
By Donation receipts	-	75,00,000
By Other receipts	1,06,40,657	1,16,99,499
By Net deficit transferred to Mumbai HO a/c	25,75,375	-
	1,32,16,032	1,91,99,499

**Saroj Lalji Mehrotra Global Nursing College,
Abu Road**

Balance Sheet as on March 31, 2020

Liabilities	Current year	Previous year
Mumbai office control a/c	2,61,00,540	2,79,33,071
Outstanding expenses	26,67,408	8,39,320
Advances / Deposits payable	2,11,026	27,39,922
	2,89,78,974	3,15,12,313
Assets	Current year	Previous year
Fixed assets	2,16,08,627	2,15,52,379
Fixed deposits	26,11,143	50,53,114
Advance & deposits	1,81,223	7,04,491
Income receivable	31,54,813	33,08,860
Cash & bank balances	14,23,169	8,93,470
	2,89,78,974	3,15,12,313

Global Hospital School of Nursing, Abu Road

Income & Expenditure Account for the year ended March 31, 2020

Expenditure	Current year	Previous year
To Administration expenses	5,52,129	3,32,243
To Depreciation	19,62,731	21,93,192
To Employment cost	44,21,079	38,06,970
To School consumables	10,30,794	9,33,000
To Insurance	30,925	51,863
To Medical relief assistance	-	15,611
To Other consumables	45,742	41,122
To Power & fuel	4,30,925	4,29,131
To Repairs & maintenance	8,49,997	14,08,550
	93,24,322	92,11,682
Income	Current year	Previous year
By Other receipts	37,50,503	76,40,150
By Net deficit transferred to Mumbai HO a/c	55,73,819	15,71,532
	93,24,322	92,11,682

Global Hospital School of Nursing, Abu Road

Balance Sheet as on March 31, 2020

Liabilities	Current year	Previous year
Mumbai office control a/c	1,85,82,838	2,16,88,947
Outstanding expenses	2,29,606	63,513
Sundry creditors	1,82,031	-
Advance for expenses	8,94,500	17,41,018
	1,98,88,975	2,34,93,478
Assets	Current year	Previous year
Fixed assets	1,69,92,488	1,89,38,719
Investments SBI FDR	-	5,75,000
Advance & deposits	23,263	31,859
Income receivable	23,61,517	28,79,492
Cash & bank balance	5,11,708	10,68,409
	1,98,88,975	2,34,93,478

Sri Adinath Fateh Global Eye Hospital, Jalore

Income & Expenditure Account for the year ended March 31, 2020

Expenditure	Current year	Previous year
To Administration expenses	5,19,635	4,05,239
To Depreciation	6,80,236	6,76,740
To Employment cost	35,67,611	30,10,451
To Insurance	10,648	1,278
To Hospital consumables	10,47,022	5,77,773
To Medical relief & assistance	855	-
To Other consumables	1,32,773	183,699
To Power & fuel	2,59,345	62,919
To Repairs & maintenance	1,16,178	76,484
To Rent, rates & taxes	5,376	-
To Net surplus transferred to Mumbai HO a/c	-	6,42,498
	63,39,678	56,37,082
Income	Current year	Previous year
By Hospital receipts	37,02,430	53,01,810
By Donation	2,84,307	2,32,880
By Other receipts	16,77,824	1,02,392
By Net deficit transferred to Mumbai HO a/c	6,75,117	-
	63,39,678	56,37,082

BSES MG Hospital, Mumbai

Income & Expenditure Account for the year ended March 31, 2020

Expenditure	Current year	Previous year
To Expenditure in properties	69,85,107	56,67,112
To Establishment expenses	4,48,76,559	3,99,69,213
To Legal expenses	49,53,774	44,95,809
To Other administration expenses	6,72,080	5,94,930
To Depreciation	97,53,265	1,01,24,541
To Amount transferred to reserve or specific fund	1,69,50,975	1,40,82,761
To Expenditure on objects of the trust	46,83,10,865	42,52,95,999
To Surplus carried over to B/S	55,25,02,625	49,88,67,478
Income	Current year	Previous year
By Hospital receipts	46,96,03,981	46,00,05,236
By Interest income of hospital	74,50,361	85,05,683
By Interest income on IP patient fund	4,09,859	4,11,500
By Interest income on kidney patient fund	1,86,215	2,37,500
By Donations	2,46,87,151	1,85,20,882
By Amount spent for specific	1,70,36,124	1,11,86,677
By Deficit carried over to Balance Sheet	3,31,28,935	13,62,888
	55,25,02,625	49,88,67,478

Sri Adinath Fateh Global Eye Hospital, Jalore

Balance Sheet as on March 31, 2020

Liabilities	Current year	Previous year
Mumbai office control a/c	67,73,914	69,84,660
Outstanding expenses	4,49,778	2,68,671
Sundry creditors	2,59,293	-
	74,82,985	72,53,331
Assets	Current year	Previous year
Fixed assets	42,83,705	48,81,144
Stock in hand	7,00,653	7,14,477
Sundry debtors	15,14,500	-
Staff advances & other advances	27,836	2,500
Cash & bank balances	9,56,291	16,55,210
	74,82,985	72,53,331

BSES MG Hospital, Mumbai

Balance Sheet as on March 31, 2020

Liabilities	Current year	Previous year
Other earmarked funds	17,84,81,767	17,84,81,767
Liabilities	6,68,47,922	6,68,47,922
Income & expenditure account	-	-
	24,53,29,689	24,53,29,689
Assets	Current year	Previous year
Immovable properties	43,01,000	47,18,127
Other fixed assets	5,27,72,651	5,56,37,078
Investments	2,00,00,000	-
Closing stock	1,50,66,332	1,59,46,555
Advances & deposits	4,53,89,305	4,36,11,095
Cash & bank balances	9,90,85,910	13,74,31,645
Income outstanding	87,14,491	2,53,23,767
	24,53,29,689	28,26,68,267

Credibility Alliance Norms Compliance Report



The Global Hospital & Research Centre trust is accredited by the Credibility Alliance under Desirable Norms.

The Credibility Alliance reviews and certifies non governmental organisations for their commitment to transparency and good governance.

Identity

The Global Hospital & Research Centre trust is registered with the Charity Commissioner of the Greater Mumbai Region (Mah.) under No. PTR/E/ 12573 dated January 5, 1990.

The functional units of the Trust are:

- >> J Watumull Global Hospital & Research Centre, Mount Abu
- >> Brigadier Vora Clinic & Jyoti Bindu Diagnostic Centre, Baroda
- >> G V Modi Rural Health Care Centre & Eye Hospital, Abu Road
- >> BSES MG Hospital, Mumbai
- >> Global Hospital Institute of Ophthalmology, Abu Road (includes the wing named P C Parmar Foundation Global Hospital Eye Care Centre)
- >> Radha Mohan Mehrotra Global Hospital Trauma Centre, Abu Road
- >> Shivmani Geriatric Home, Abu Road
- >> Saroj Lalji Mehrotra Global Nursing College, Abu Road

>> Global Hospital School of Nursing, Abu Road

>> Sri Adinath Fateh Global Eye Hospital, Jalore

Two permanent positions at J Watumull Global Hospital & Research Centre, Mount Abu, medical director and honorary medical director, are held by Dr Partap Midha and Dr Ashok Mehta respectively.

At BSES MG Hospital, BK Yogini is the honorary director for administration.

Dr Banarsi Lal Sah is the honorary treasurer of the Global Hospital & Research Centre trust.

The Trust Deed is available on request.

Trust Registration

>> Under section 12A of the Income Tax Act, 1961 vide No.TR/27348 dated January 15, 1990.

>> With the DIT Exemptions, under section 80G, vide registration No.DIT(E)/MC/80g/1303/2008/2008-09 valid in perpetuity.

>> Under section 6 (1) (a) of the Foreign Contribution (Regulation) Act, 1976 (FCRA registration No. 083780494 dated June 5, 2016) valid until October 31, 2021.

Name & Address of FCRA Bank

Union Bank of India, 11 Vithal Nagar Co-op Hsg. Society, 10th Road JVPD Scheme, Vile Parle (West), Mumbai 400056.

Name & Address of Auditor

Balkrishna T Thakkar & Co, 6th floor, 602-603, "Saffron", Near Bank of Baroda, Ambawadi, Ahmedabad, 380 006.

Vision & Mission

Mission: To provide world class complete healthcare services responsibly and with a human touch at affordable prices.

Vision: Healthcare for all irrespective of social or economic background.

Governance

The Global Hospital & Research Centre

trust Board met five times during the year 2019-20, on May 2, October 16, December 4, February 3 and February 28.

Minutes of the Board meetings are documented and circulated.

A Board Rotation Policy (of non-rotation) exists and is practised. Minutes of the Board meetings are documented and circulated.

The Board approves programmes, budgets, annual activity reports and audited financial statements. The Board ensures compliance with laws and regulations.

Accountability & Transparency

>> The following payments have been made to Board members in 2019-20:

Professional fees paid to trustee Dr Ashok Mehta for operations he has performed: Rs 60,89,191.

Remuneration paid to trustee Dr Ashok Mehta for being a member of the Ethics Committee: Rs 2,500.

Reimbursements to trustees for domestic travel: Nil

No other reimbursements have been made to any Board member, trustee or shareholder.

>> Remuneration of the highest paid staff members: Rs 2,50,000 | Rs 2,00,000 | Rs 1,85,000

>> Monthly remuneration of the lowest paid staff member: Rs 6,750

>> Total cost of national travel by all personnel (including volunteers) and Board members: Rs 7,85,414

>> Total cost of international travel by all personnel (including volunteers) and Board members: Nil

Staff Details

All trustees are "volunteers" working pro bono. They are not included in these numbers.

Cleaning labourers, paid volunteers and trainees being paid a stipend are also excluded.

Details of Board Members

Name	Age	Gender	Position on Board	Occupation	Area of competency	Meetings attended
BK Nirwair	82	M	Managing Trustee	Social worker	Social service	5/5
Dr Ashok Mehta	83	M	Trustee	Honorary Medical Director & Consultant Cancer Surgeon, BSES MG Hospital, Mumbai	Oncology	3/5
Gulu Watumull	70	M	Trustee	Business person	Business	1/5
Mahesh Patel	67	M	Trustee	Chartered accountant and businessman with a chain of care homes in the UK	Healthcare	2/5
Dr Partap Midha	70	M	Trustee	Medical Director, J Watumull Global Hospital & Research Centre	Hospital management	5/5
Yogini Bhupatrai Vora	69	M	Trustee	Director, Rajyoga Centres, Vile Parle Sub-Zone	Social service	3/5
Kishore D Shah	70	M	Trustee	Retired business person	Business	5/5
Jeetendra G Modi	78	M	Trustee	Civil engineer experienced in developing real estate	Civil engineer	4/5
Rashmikant Acharya	54	M	Trustee	Retired global finance and technology specialist	Global finance and technology	2/5
Dr Banarsi Lal Sah	66	M	Trustee	Doctor turned social worker	Social work	5/5
Chetan Mehrotra	57	M	Trustee	Business person	Business	2/5

* Chetan Mehrotra has resigned from the trust effective October 2020. However, this table shows the participation at Board meetings during the reporting year, FY 2019-20.

Distribution of staff according to category

Gender/ Staff distribution	Male	Female	Total
Paid full time	460	435	895
Paid part time	7	14	21
Paid consultants	-	-	-
Volunteers	59	48	107

Distribution of staff according to salary level

Slab of gross salary (Rs) plus benefits paid to staff	Male	Female	Total
< 5000	5	14	19
5000 -10000	114	58	172
10000 -25000	240	268	508
25000 -50000	58	75	133
50000 -100000	30	23	53
> 100000	20	11	31
Total	467	449	916

Contribute to hospital activities

Find us on www.GiveIndia.org

Donate via www.ghrc-abu.com
(Paypal enabled)

Cut a cheque favouring
Global Hospital & Research Centre

Transfer via NEFT (Indians) or
Telegraphic Transfer (overseas donors)

Email ghrcabu@gmail.com for details

Did you know?

Donors who pay taxes in India can avail income tax benefits under section 80 G of the Income Tax Act of 1961

50% of the donated amount is deductible from income for the purpose of computation of taxable income



Global Hospital & Research Centre

Delwara Road, Mount Abu 307501 Rajasthan, INDIA

T +91 2974 238347/8 F +91 2974 238570 E ghrcabu@gmail.com

URL www.ghrc-abu.com

